



TECHNICAL REPORT

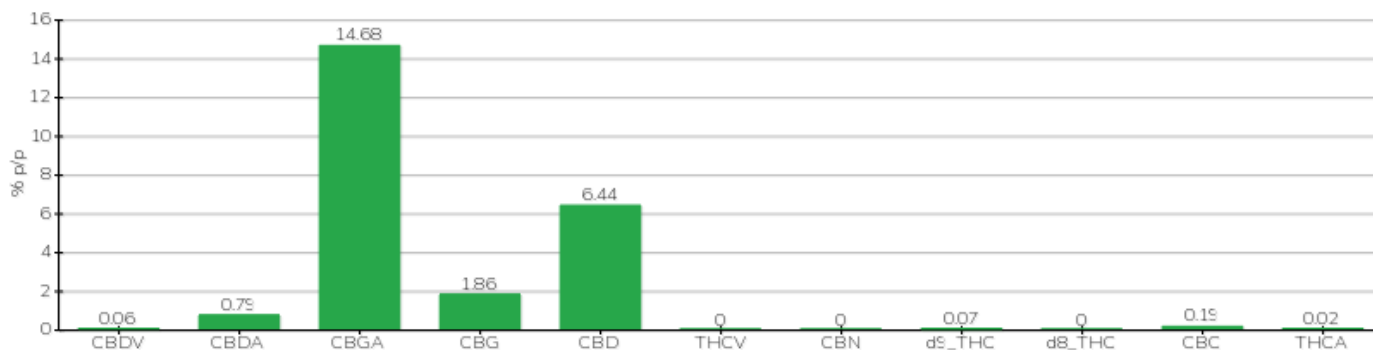


| | | | |
|-----------------------------------|-------------------|---------------------------|--------------------|
| Committente | | Etichetta | G |
| Data accettazione | 07/09/2021 | Tipologia campione | Semilavorato |
| Data analisi | 08/09/2021 | varietà | NA |
| Codice riferimento interno | BEI0709.4 | N. Cartellino | SE5592636145 01 |
| Metodica analitica | HPLC - HS - Rev.2 | Campionamento | a cura del cliente |
| Lotto | □ | | |

Note

| Parametro | % p/p | Metodo |
|-------------------|---------------|------------------|
| CBDV | 0.06% | HPLC-UV |
| CBDA | 0.79% | HPLC-UV |
| CBGA | 14.68% | HPLC-UV |
| CBG | 1.86% | HPLC-UV |
| CBD | 6.44% | HPLC-UV |
| THCV | <0.01% | HPLC-UV |
| CBN | <0.01% | HPLC-UV |
| d9_THC | 0.07% | HPLC-UV |
| d8_THC | <0.01% | HPLC-UV |
| CBC | 0.19% | HPLC-UV |
| THCA | 0.02% | HPLC-UV |
| CBD TOTALE | 7.13% | CALCOLATO |
| CBG TOTALE | 14.75% | CALCOLATO |
| THC TOTALE | 0.09% | CALCOLATO |

CAMPIONE ANALIZZATO: NA(0.00gr)



Pineto

09/09/2021