

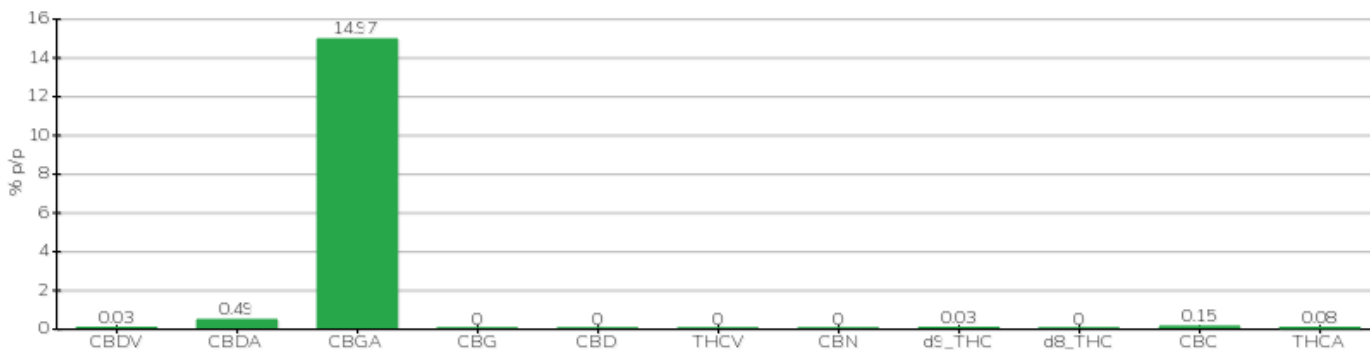
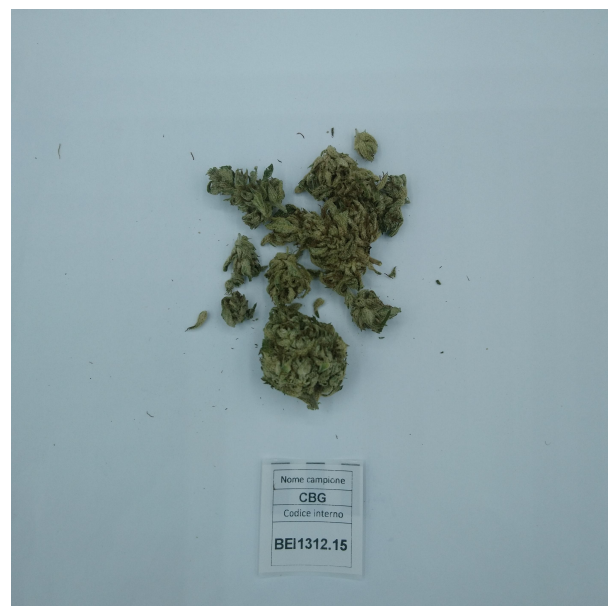
# TECHNICAL REPORT

<b>Committente</b>		<b>Etichetta</b>	CBG
<b>Data accettazione</b>	13/12/2022	<b>Tipologia campione</b>	
<b>Data analisi</b>	16/12/2022	<b>varietà</b>	NA
<b>Codice riferimento interno</b>	BEI1312.A.15	<b>N. Cartellino</b>	NA
<b>Metodica analitica</b>	HPLC - HS - Rev.2	<b>Campionamento</b>	a cura del cliente
<b>Lotto</b>	□		

**Note**

Parametro	% p/p	Metodo
CBDV	0.03%	HPLC-UV
CBDA	0.49%	HPLC-UV
CBGA	14.97%	HPLC-UV
CBG	<0.01%	HPLC-UV
CBD	<0.01%	HPLC-UV
THCV	<0.01%	HPLC-UV
CBN	<0.01%	HPLC-UV
d9_THC	0.03%	HPLC-UV
d8_THC	<0.01%	HPLC-UV
CBC	0.15%	HPLC-UV
THCA	0.08%	HPLC-UV

CAMPIONE ANALIZZATO: NA(0.00gr)



Pineto

18/12/2022